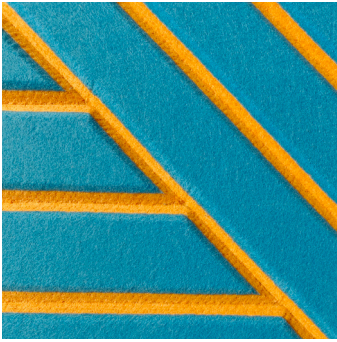


# J2 PET Felt Composite Panel

## PRODUCT DATA AND SPECIFICATIONS



J2 PET Felt Composite Panels consist of a 3mm PET Felt facing on top of a 9mm or 12mm PET Felt backer. This composite construction allows for dramatic edge details, as well as contrasting color reveals when engraved.

- ✓ Eco-friendly
- ✓ Engravable
- ✓ 34 Colors (Backing)
- ✓ 48 Colors (Facing)

**COMPOSITION:** 100% PET (>75% recycled PET material)

**THICKNESS:** 12mm, 15mm, other custom thicknesses available

**DENSITY:** 1900g/sqm-2400g/sqm (approx 12pcf)

**DIMENSIONS:** Full Panel 39in x 96in

**FIRE RATING:** ASTM E84 – Class B (Class A panels available on request, color options may vary)  
EN13501 - Class B

**ACOUSTIC NRC:** 0.3-0.9 Depending on thickness and air gap

**APPLICATION:** Screen, wall, and ceiling panels

**MATERIAL NOTES:** Variation in thickness, fiber mix and color, as well as flecks and other slight surface blemishes are an inherent feature of this product and are unavoidable. Variation from batch to batch may occur.

**CLEANING & CARE:** Remove dust and dirt by dusting, vacuuming, or with a soft cloth or sponge and a solution of carpet or upholstery shampoo. Use a soft, damp cloth and blot dry. Spot cleaner can be used for lightly soiled areas.

**MOUNTING OPTIONS:** Panels can be installed on wall and ceiling surfaces via fasteners, or standard construction adhesives. When installing with adhesives, the panels can be mounted directly to the surface, or furring strips can be installed to create an air gap behind the panels.

**WARRANTY:** 4-year warranty against workmanship and manufacturing defects.

## 12MM PET ACOUSTIC FELT NRC COMPARISON:

Frequency/Hz	100	125	160	200	250	315	400	500	630	800	1000	1250	1600	2000	2500	3150	4000	NRC
No Cavity	0.04	0.03	0.04	0.05	0.06	0.10	0.11	0.22	0.30	0.43	0.55	0.65	0.73	0.82	0.92	0.98	1.03	0.4
50mm / 2in	0.16	0.16	0.19	0.29	0.38	0.48	0.61	0.75	0.83	0.97	0.97	0.93	0.96	0.91	0.86	0.83	0.89	0.75
150mm / 6in	0.26	0.37	0.41	0.62	0.68	0.82	0.89	0.98	0.90	0.92	0.81	0.75	0.82	0.87	0.87	0.90	0.90	0.85