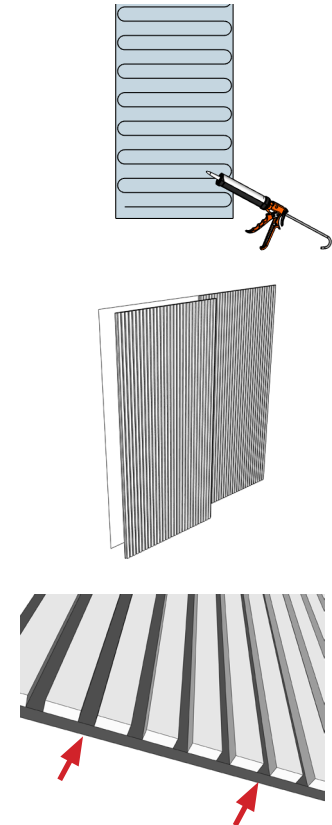


J2 Wood Veneer Panel

PRODUCT INSTALLATION AND MOUNTING GUIDE

DIRECT MOUNT WITH ADHESIVE AND FASTENERS

1. Use a standard construction adhesive (Loctite, Titebond, Liquid Nails, etc.) **Do not use PVA glue.**
2. Clean surfaces and substrate. Note the location of studs or ceiling joists beforehand.
3. Apply adhesive evenly around edge and in corners on the back of the panel. Leave enough space from edge to avoid adhesive expanding out from the edge of panel when pressed on surface. Wipe any excess adhesive with a rag immediately if this occurs.
4. Press firmly into place, then drive screws through the felt backer panel in the space between the wood veneer strips using black screws with a flush, countersunk head. Be sure to fasten into solid structure (stud, joist, etc.)



TRIMMING OR CUTTING

1. If cutting length-wise between wood veneer strips, turn panel face down, mark cutting location, and use a sharp utility knife and straight edge, or a jigsaw with a soft-material blade to cut.
2. If cutting width-wise, or within the panel, tape over the cut area with masking tape, then carefully cut across the wood veneer strips with a circular saw or jigsaw. Carefully remove tape and gently sand edges with fine grit sandpaper if needed.